

METRIC DISTANCES AND COORDINATES SHOWN ON THIS PLAN ARE IN METRES AND CAN BE CONVERTED TO FEET BY DIVIDING BY 0.3048

PLAN 49M-113

I certify that this Plan is registered in the Land Registry Office for the Land Titles Division of Renfrew No. 49 at 10:32 o'clock on the 6th day of June, 2022 and entered in the register for Property Identifier 57339-0261

N° 8291706

and required consents are registered as Plan Document 57339-0261

Representative for the Land Registrar

THIS PLAN COMPRISES ALL OF PIN 57339-0261.

BRUCE HOWARTH, M.O.P. RPP
MANAGER OF PLANNING SERVICES
DEVELOPMENT AND PROPERTY DEPARTMENT
CORPORATION OF THE COUNTY OF RENFREW

THIS FINAL PLAN OF SUBDIVISION IS APPROVED UNDER S.S.51(98) OF THE PLANNING ACT ON THIS 31st DAY OF May, 2022

SCALE 1:1000
0 10 20 30 40 50 60 70 80 90 100 metres
FAIRHALL, MOFFATT & WOODLAND LIMITED
ONTARIO LAND SURVEYORS

**PLAN OF SUBDIVISION OF
PART OF LOT 17, CONCESSION 2
GEOGRAPHIC TOWNSHIP OF McNAB
TOWNSHIP OF McNAB/BRAESIDE
COUNTY OF RENFREW**

OWNER'S CERTIFICATE
THIS IS TO CERTIFY THAT:
1. LOTS 1 TO 10, BOTH INCLUSIVE, BLOCKS 11 AND 12, THE STREET, NAMED SHADY MAPLE ROAD HAVE BEEN Laid OUT IN ACCORDANCE WITH OUR INSTRUCTIONS.
2. THE STREETS ARE DEDICATED TO THE CORPORATION OF THE TOWNSHIP OF McNAB/BRAESIDE AS PUBLIC HIGHWAYS.
DATED THIS 16th DAY OF June, 2022.

I HAVE THE AUTHORITY TO BIND THE CORPORATION
KOSKA DEVELOPMENT CORP.
SUSAN ANGLIN
PRESIDENT

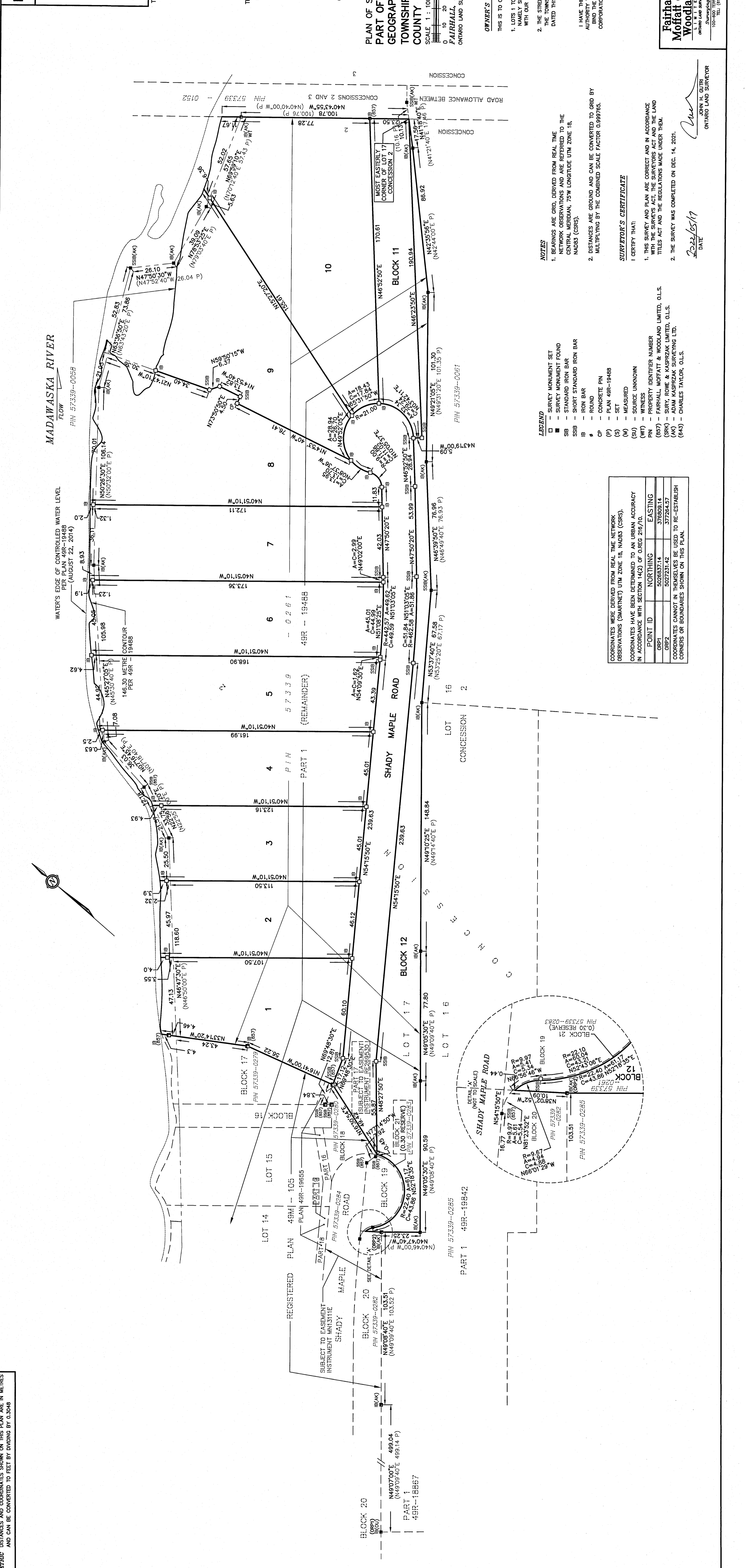
NOTES
1. BEARINGS ARE GRID, DERIVED FROM REAL TIME NETWORK OBSERVATIONS AND ARE REFERRED TO THE CENTRAL MERIDIAN, 75°W LONGITUDE UTM ZONE 18, NAD83 (CSRS).
2. DISTANCES ARE GROUND AND CAN BE CONVERTED TO GRID BY MULTIPLYING BY THE COMBINED SCALE FACTOR 0.999785.

SURVEYOR'S CERTIFICATE
I CERTIFY THAT:
1. THIS SURVEY AND PLAN ARE CORRECT AND IN ACCORDANCE WITH THE SURVEYORS ACT AND THE LAND TITLES ACT AND THE REGULATIONS MADE UNDER THEM.
2. THE SURVEY WAS COMPLETED ON DEC. 14, 2021.

DATE: 2022/05/17
JOHN H. GUTHRIE
ONTARIO LAND SURVEYOR

Fairhall Moffatt & Woodland
O T T A W A
Surveying and Land Information Services
100-600 TERRY FOX DRIVE, KANATA, ONTARIO K2L 4K6
TEL: (613) 591-2500 FAX: (613) 591-1485
www.fairhallmoffatt.com

JOB NO. Y 3 9 8 0 0
E 289123, N 5027262
REFERENCE NO. 228 - 2 McNAB
S:\V085\08000\DWG\Y085_mfn_wpld_049.dwg
15/12/2021 10:32 AM



- LEGEND**
- - SURVEY MONUMENT SET
 - - SURVEY MONUMENT FOUND
 - SB - STANDARD IRON BAR
 - SSB - SHORT STANDARD IRON BAR
 - IB - IRON BAR
 - CP - CONCRETE PIN
 - (S) - SET
 - (M) - MEASURED
 - (SU) - SOURCE UNKNOWN
 - (WT) - WITNESS
 - PIN - PROPERTY IDENTIFIER NUMBER
 - (B57) - FAIRHALL, MOFFATT & WOODLAND LIMITED, O.L.S.
 - (SRK) - SURY, ROWE & KASPRZAK LIMITED, O.L.S.
 - (AK) - ADAM KASPRZAK SURVEYING LTD.
 - (643) - CHARLES TAYLOR, O.L.S.

COORDINATES WERE DERIVED FROM REAL TIME NETWORK OBSERVATIONS (SMARTNET) UTM ZONE 18, NAD83 (CSRS). COORDINATES HAVE BEEN DETERMINED TO AN URBAN ACCURACY IN ACCORDANCE WITH SECTION 14(2) OF OREG 216/10.

POINT ID	NORTHING	EASTING
ORP1	5026837.14	3768609.14
ORP2	5027231.42	377264.57

COORDINATES CANNOT IN THEMSELVES BE USED TO RE-ESTABLISH CORNERS OR BOUNDARIES SHOWN ON THIS PLAN.